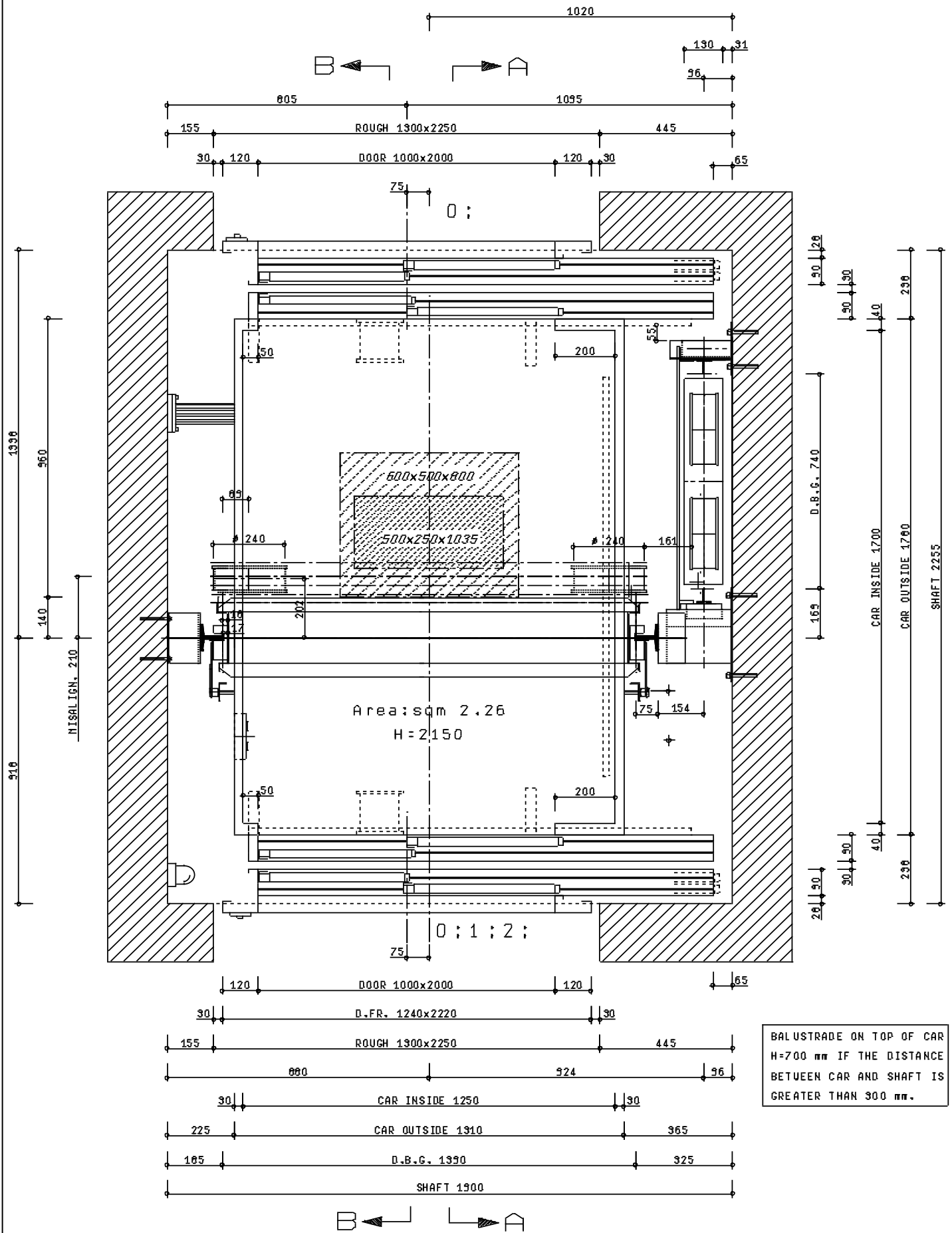


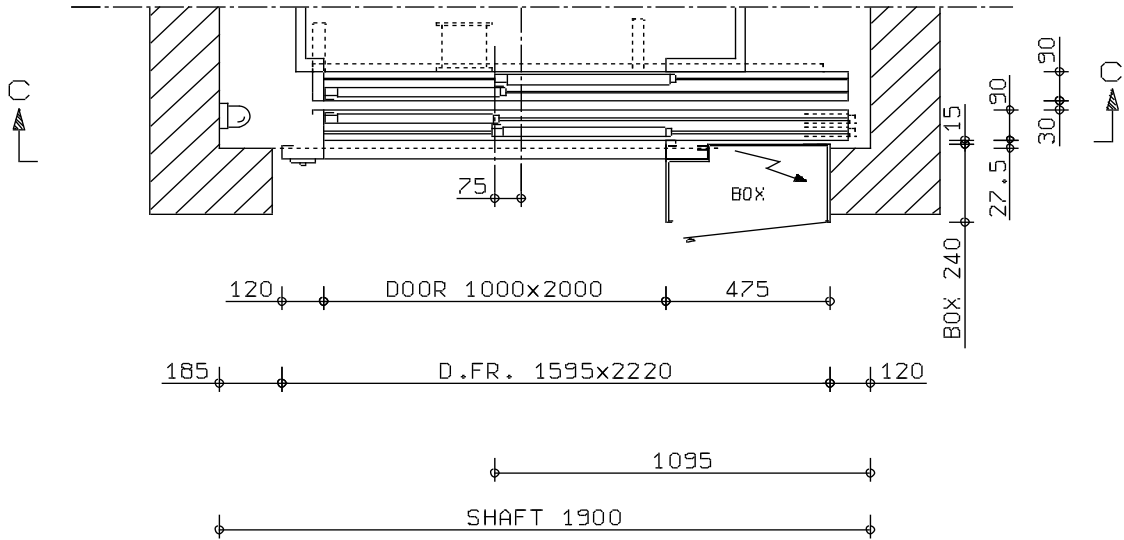
TECHNICAL DATA CARATTERISTICHE IMPIANTO			LOAD ANALYSIS CARICHI				daN
ROPE ELEVATOR ELEVATORE ELETTRICO	95/16/CE		LOAD+CAR+CAR FRAME CABINA CARICATA			1996 +	
LOAD PORTATA Kg.	1000		COUNTERWEIGHT CONTROPESO			1446 +	
PASSENGERS CAPIENZA persone	13		ROPES FUNI			20 =	
SPEED VELOCITA' m/sec.	1/0000		TOTAL TOTALE			3462 x	
STOPS FERMATE n°	3		DYNAMIC FACTOR COEFF.INCREMENTO DINAMICO			1.5 =	
ENTRANCES SERVIZI n°	4		DYNAMIC LOADS CARICHI DINAMICI			5193 +	
CAR SLING ARCATA	MRLN		HOISTGEAR+BEAMS ARGANO+TRAVI			607 =	
ROPES : No - DIAMETER FUNI : NUMERO - DIAMETRO	n. 7-Ø6.5 A.M. 152 fili		TOTAL TOTALE			5800	
ROPE LENGTH EACH LUNGHEZZA FUNI cad. m.	29		daN				
HOISTGEAR TYPE ARGANO TIPO	6300 T1		(R1)	(R2)	(R3)	(R4)	
RATIO RAPPORTO	-		3190	1572	1149		
TRACTION SHEAVE PULEGGIA DI FRIZIONE mm.	240		(R5)	(R6)	(R7)	(R8)	
CORNER GROOVE ANG. GOLE gradi	45		4072	2198	5784		
CORNER CUT ANG. INTAGLIO gradi	0		NOTES NOTE				
DEFLECTION PULLEY PULEGGIA DI RINVIO mm.	0						
CAR GUIDE-RAILS GUIDE CABINA	90x75x16-T						
COUNTERWEIGHT RAILS GUIDE C/PESO	50x50x5						
BRACKETS FOR CAR GUIDE-RAILS STAFFE n°	12 + 12						
MAX DISTANCE BETWEEN BRACKETS Distanza MAX STAFFE m.	1.5						
COUNTERWEIGHT C/PESO IN	NON USARE	---					
FILLER WEIGHT BLOCCHI n°	68	---					
BALANCING BILANCIAMENTO %	45						
POWER SUPPLY TENSIONE FORZA MOTRICE V.	400 - 50 Hz						
LIGHT LUCE V.	220		CUSTOMER : .. UBIC.(ADDRESS) : .. UBIC.(CITY) : <i>POLAND</i>				
OPERATION MANOVRA Vca.	110		ELEVATOR NUMBER RIFERIMENTO CLIENTE 13212				
MOTOR MOTORE Kw.	6.5		DRWG. NUMBER COMMESSA-DISEGNO P15712				
R.P.M. GIRI/MINUTO	159		<h1 style="text-align: center;">ELEVATOR</h1> <p style="text-align: center;">Equipment Sp.z o.o</p>				
POLES POLI n°	16						
CAR BUFFERS AMM. CABINA 2 cad	EC						
CTW BUFFERS AMM. C/PESO 2 cad	EB						
Fy 105 daN Fx 108 daN							
			PREPARED BY DISEGNATO	DATE DATA	CHECKED BY CONTROLLATO	DATE DATA	
			G.R.	05/11/12			

SHAFT AND CAR PLAN Scale 1/10



PARTICULAR PLAN FOR FLOOR 2 - Scale 1/20

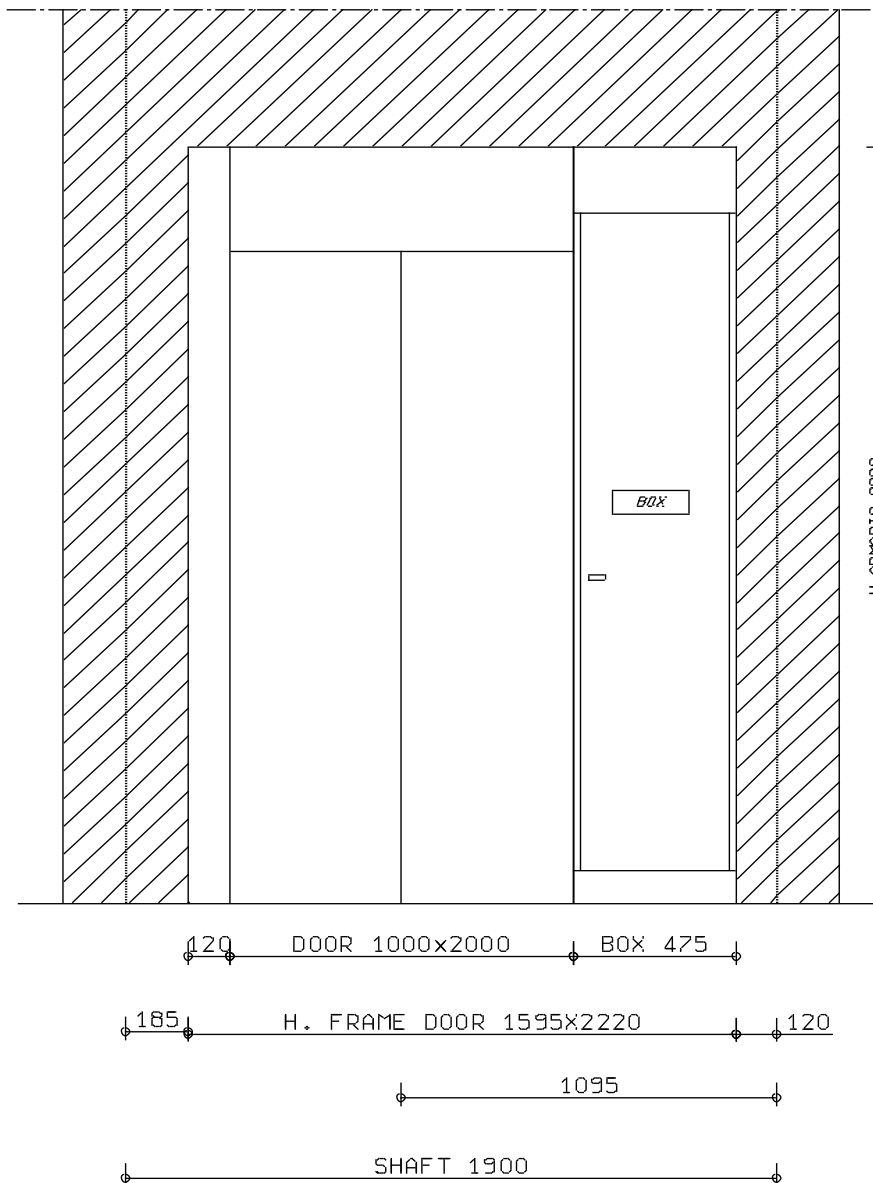
AND BOX POSITION



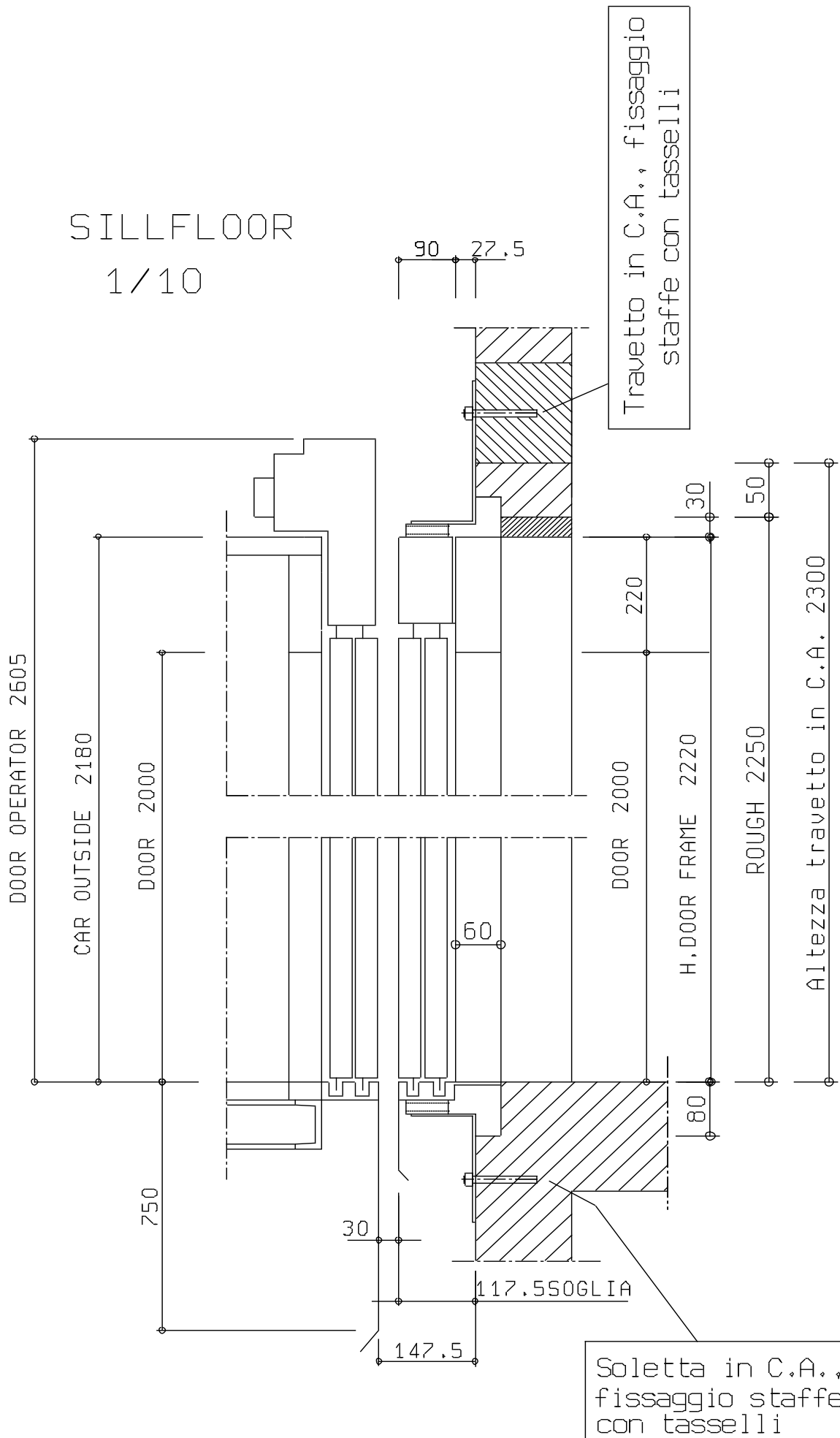
SECTION C-C - Scale 1/20

PARTICULAR OF FLOOR 2

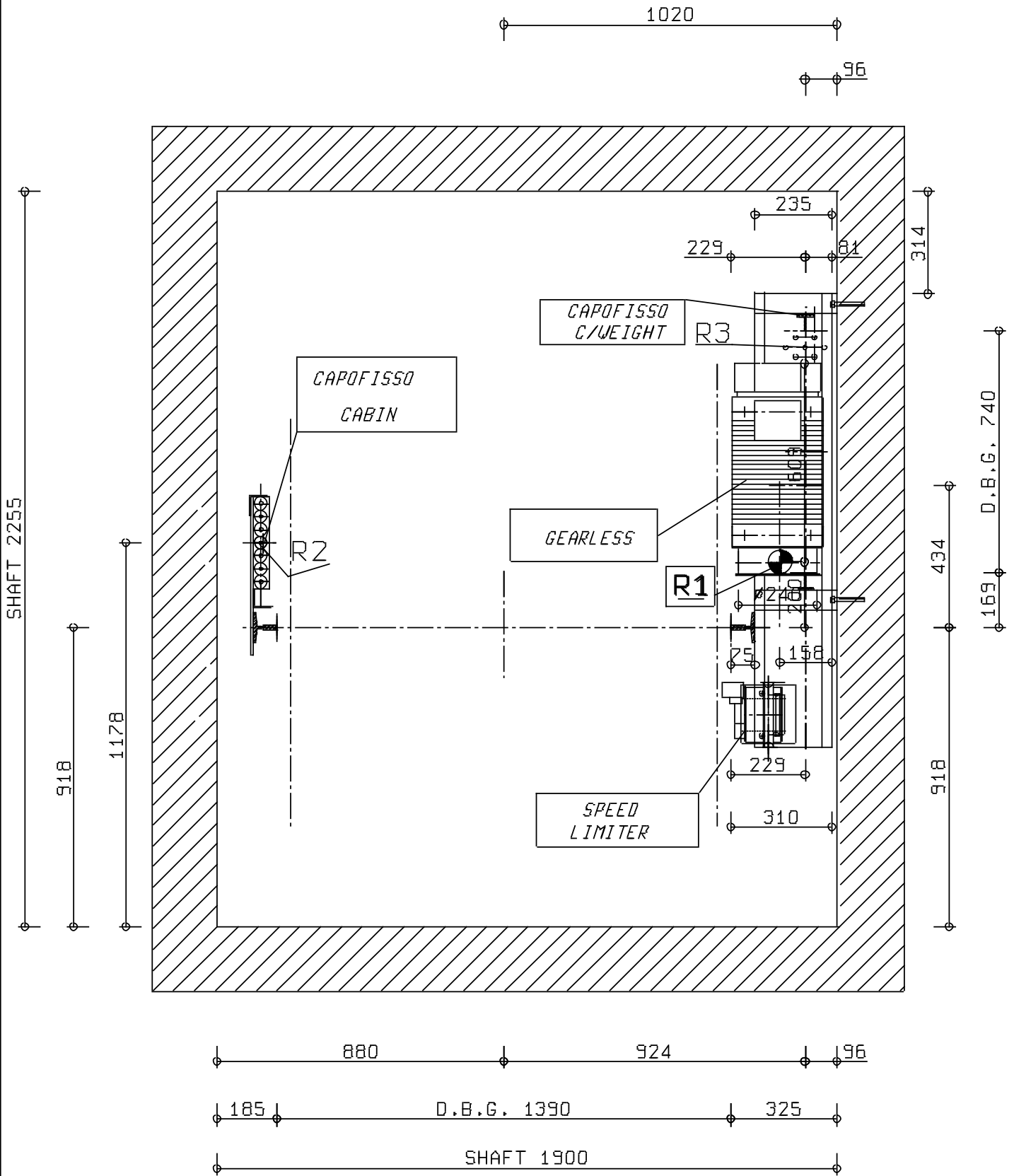
AND BOX POSITION



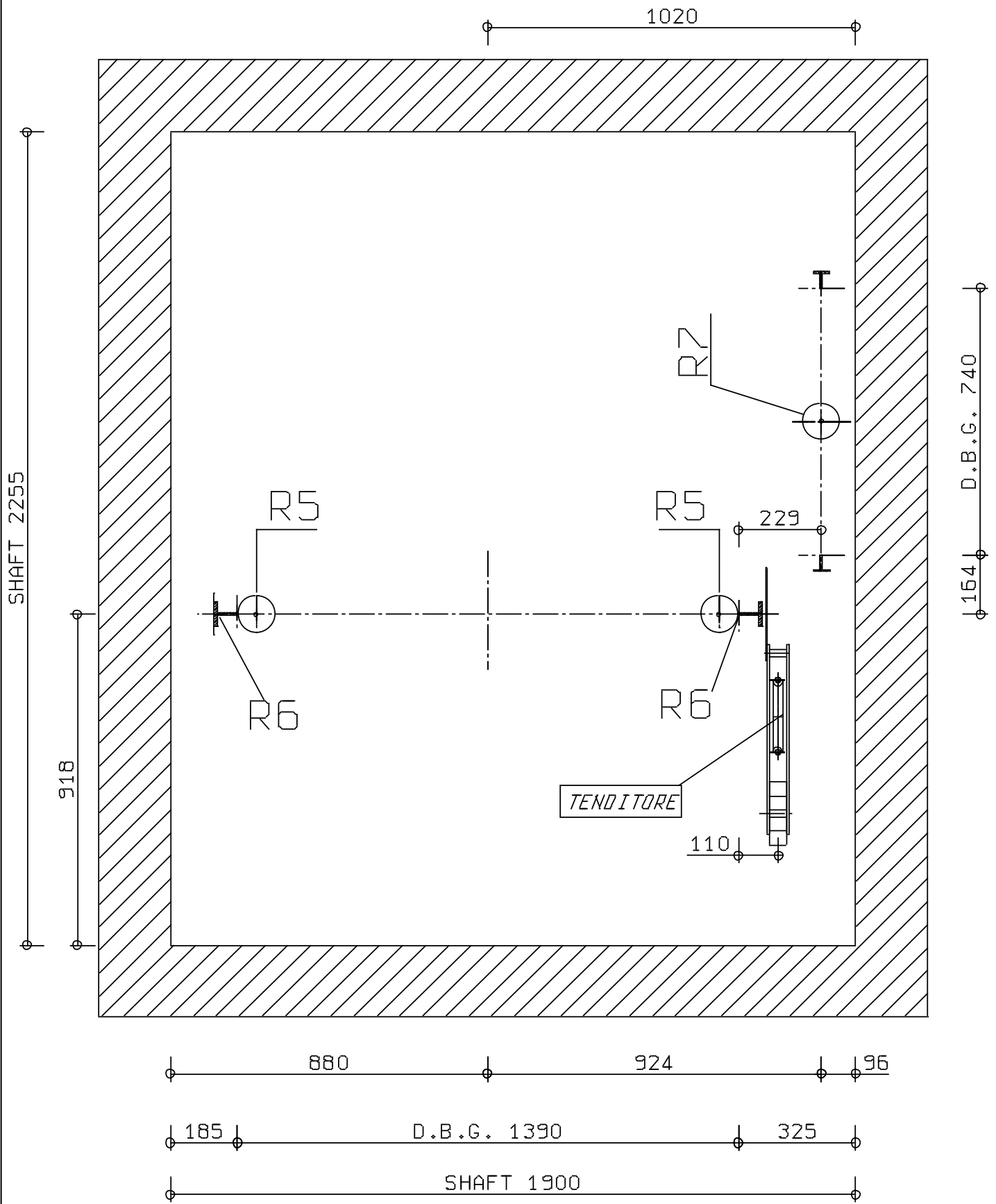
SILLFLOOR 1/10



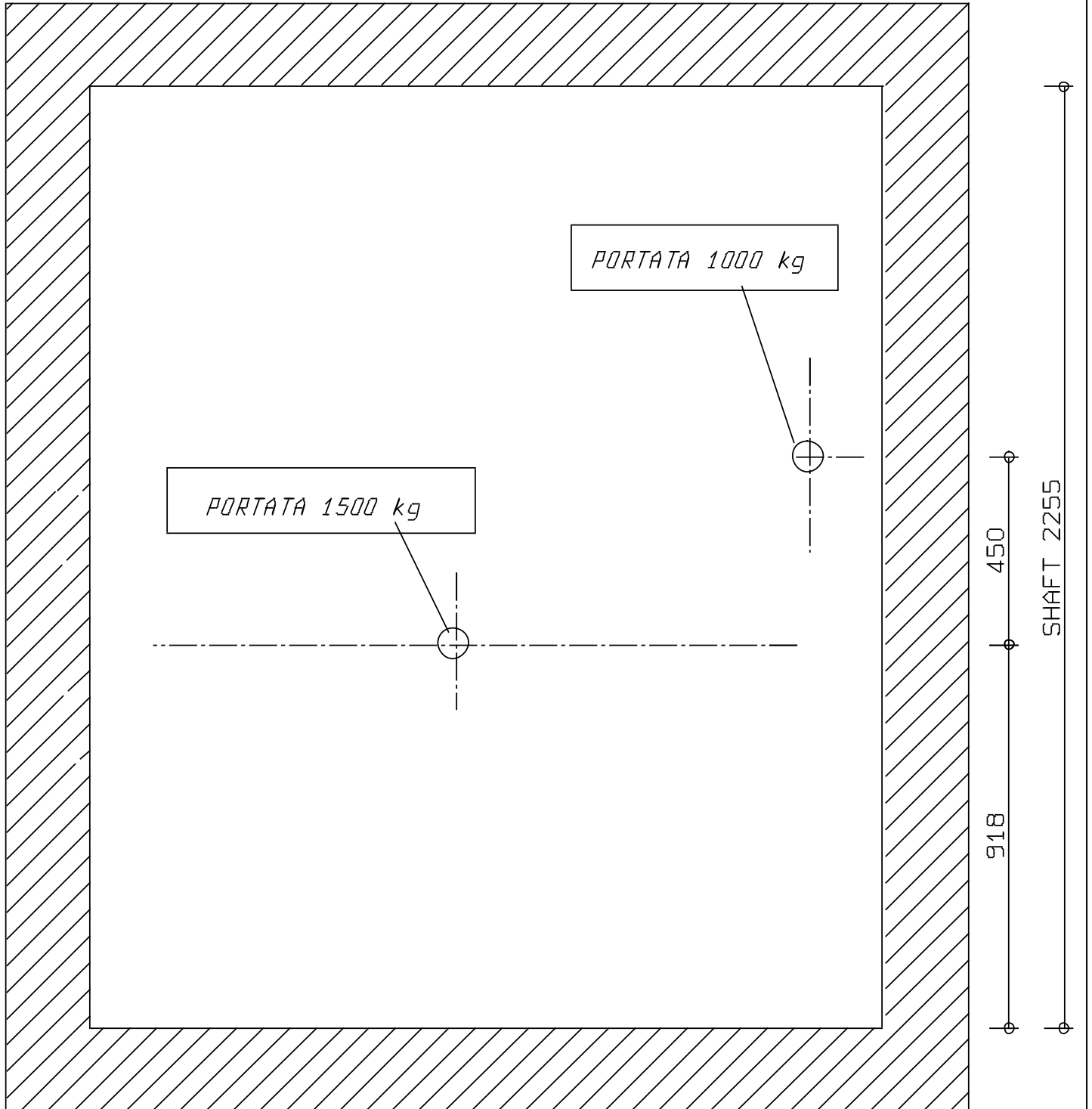
MACHINE PLAN Scale 1/20



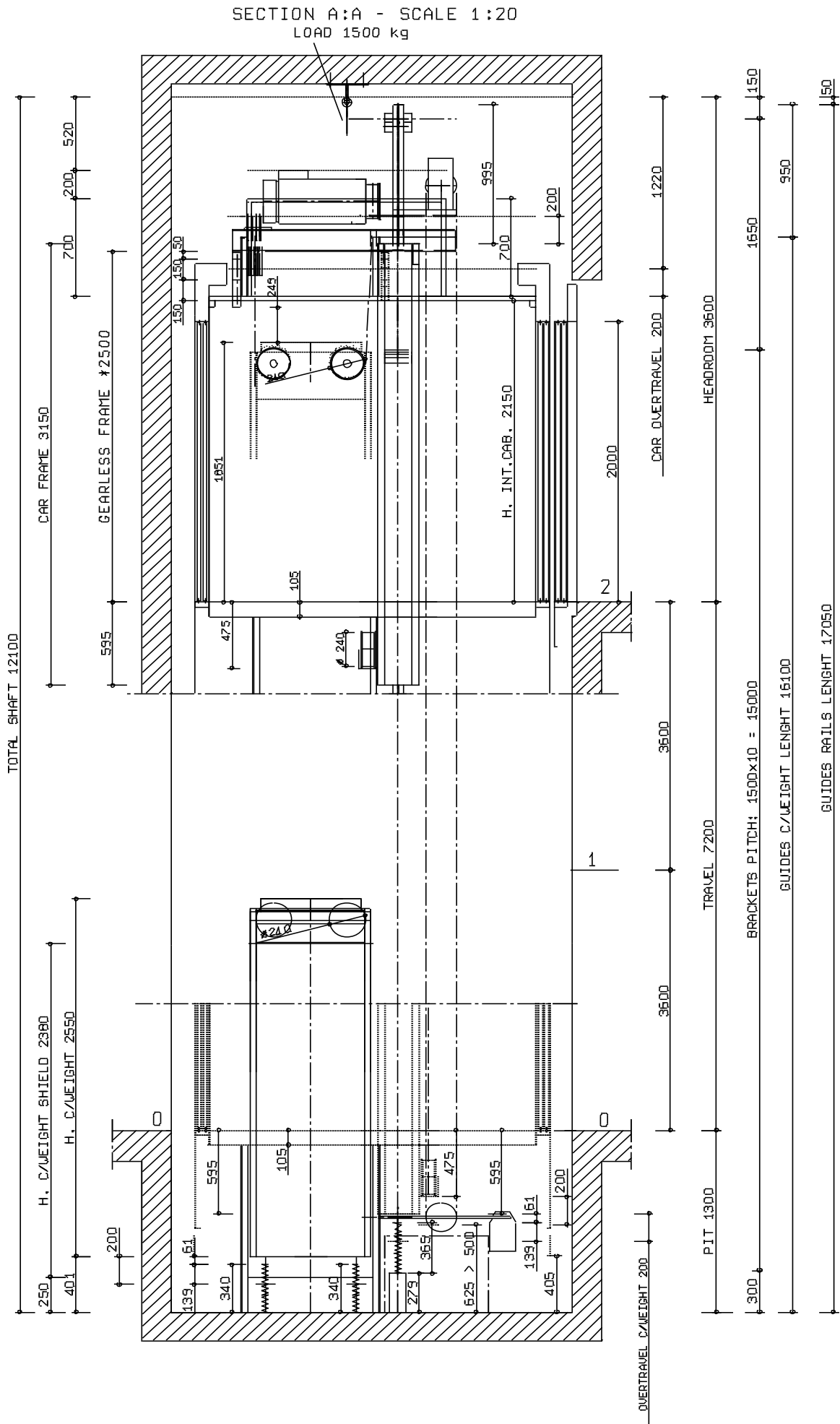
PIT PLAN Scale 1/20



HOOKS PLAN - 1/20



START WITH SMALLER GUIDES PIECES IN THE TOP



SECTION B:B - SCALE 1:20

